

Technical Information & Data Reference

ROTATIONAL AZIMUTHAL GAMMA

ROTATIONAL AZIMUTHAL GAMMA

Overview

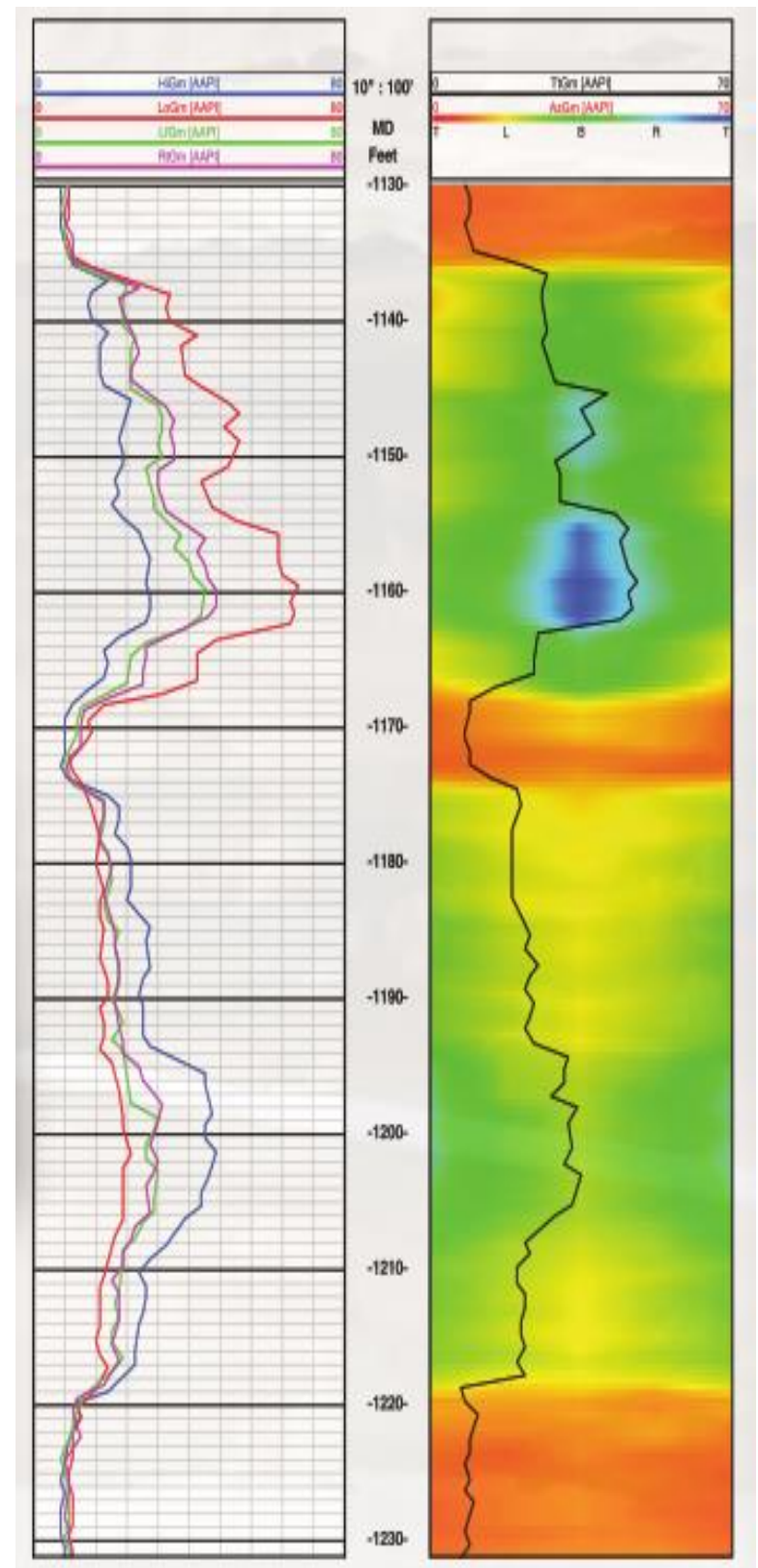
KAMBI's Azimuthal Gamma Module (KAGM) can provide solution for increasing complexity of drilling and geology which requires more accurate decision making to remain in the pay zone. KAGM detects and save to memory sixteen (16) sections of gamma borehole images. These images can be combined into as many as eight configurable sections (8) and transmitted while drilling. It also provides precise total gamma ray and near bit inclination information while drilling. With azimuthal gamma and inclination, operators can make instantaneous corrections to the well bore trajectory where the real-time borehole images facilitate geosteering and provide the formation structural information. This single LWD tool delivers superior value for reservoir well placement and evaluation as well as identify the top or bottom boundary formation.



Features

- Depth determination and correlation within and between wells.
- Lithology identification.
- Qualitative evaluation of shaliness and radioactive mineral deposits.
- Dynamic rotary geosteering while drilling.
- Distinguish shales from non-shales.
- Estimate clay content in sands and limestone.
- Correlation of real-time data with offset logs to determine geologic location.
- Picking casing and coring point specifications.

| Specifications | |
|------------------------|-------------------------------|
| Operating Temperature: | 40°C to 175°C |
| Max . Pressure: | 20,000 PSI count |
| Sensitivity: | 0.82 counts per API |
| Accuracy: | ±5% to 150°C / ± 10% to 175°C |
| Penetration: | <12-18 "(30 - 45 cm) |
| Vibration: | 3axis) 5- - 300 Hz, Max 20 G |
| Shock: | 500 G, 0.5ms |
| Operating Voltage: | 18 - 38V |
| Gamma Window Range: | 30° - 120° |
| Rotation Speed Range: | 0-200 rpm |
| Inclination Range: | 60° - 120° |
| Connection Style: | Kinetic |
| Dimensions : | 1.875" OD x 45"L /25lbs |



Technical Information & Data Reference

ROTATIONAL AZIMUTHAL GAMMA

GAMMA PLUS REAL-TIME LOGGER

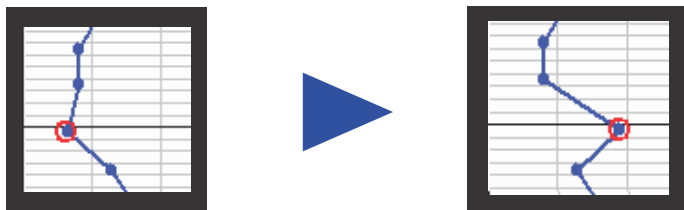
ROTATIONAL AZIMUTHAL GAMMA

Overview

With strong recording and processing capability, KAMBI Gamma Plus Real-Time Logger is able to manage all WITS data and display the information on the monitor. Through the user-friendly interface, you can manage and manipulate job and statistic information fast and easily.

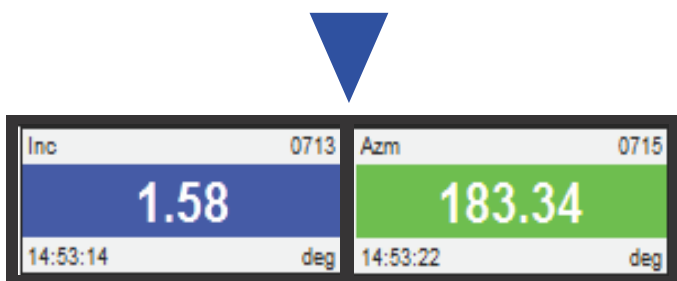
KAMBI Gamma Plus Real-Time Logger functions perfectly in tandem with the KAMBI Receiver software on a single computer or a serial cable can be used to receive WITS data from a third-party program. The KAMBI solution is more efficient and economical than the competition's products, and has all the necessary features.

Easy Data Correction



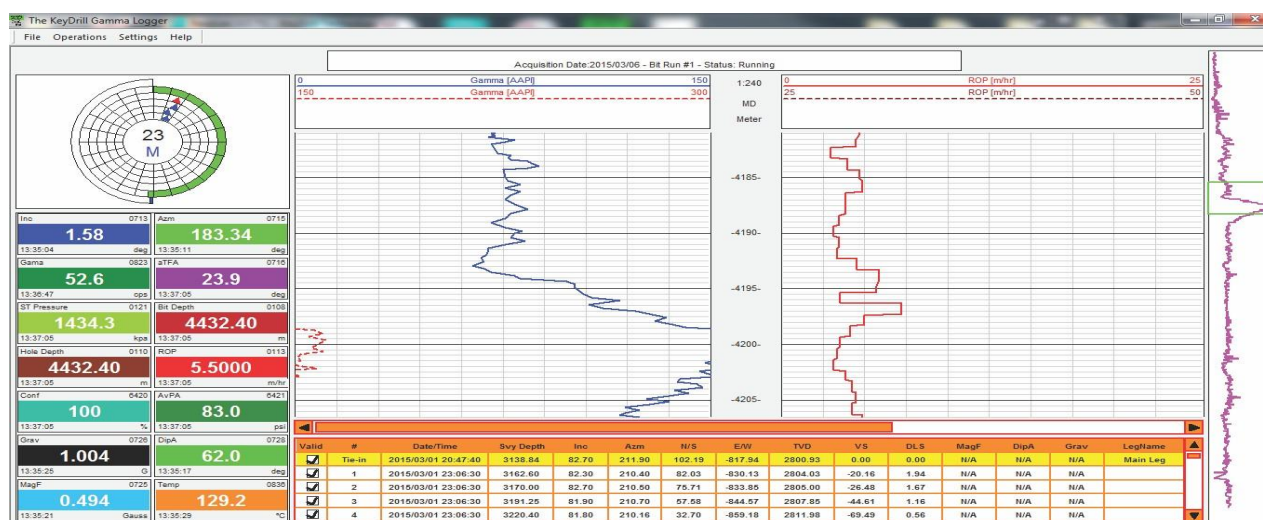
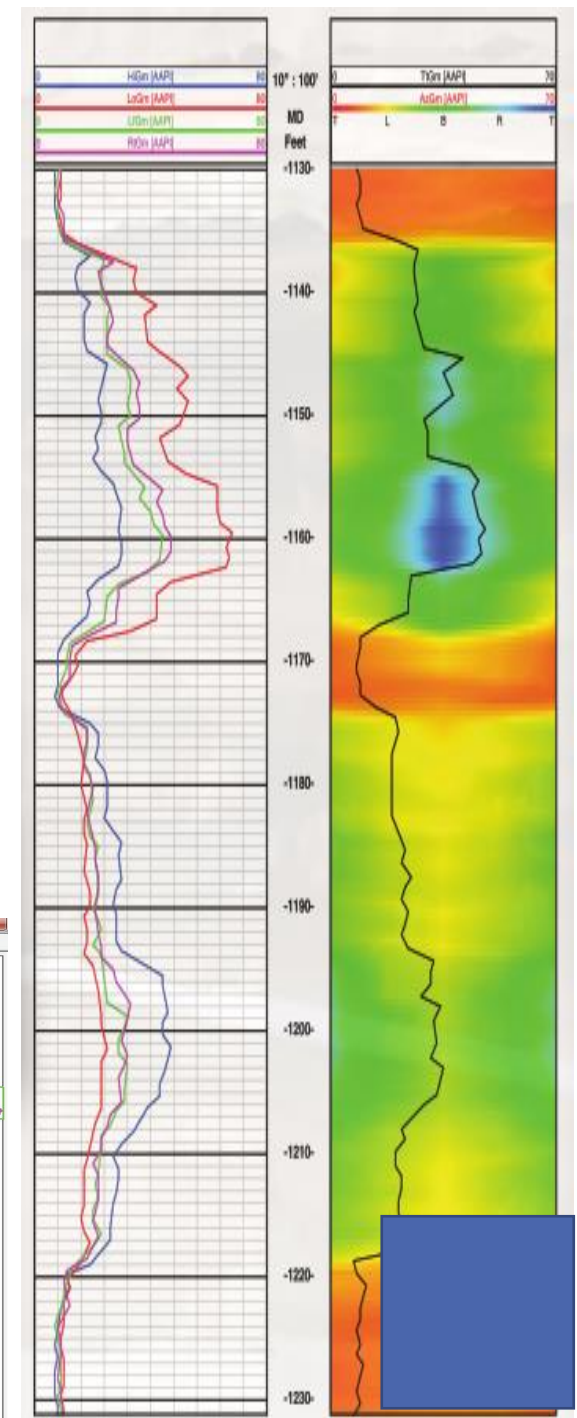
Customized Real Time Display

| Data Name | WITS ID1 | WITS ID2 | Unit | Color |
|-----------|----------|----------|------|-------|
| Inc | 0713 | | deg | Blue |
| Azm | 0714 | 0715 | deg | Green |



Features

- Real-Time Data recording and processing.
- Accommodates WITS data through serial ports from any third-party software or running in tandem with the KAMBI Receiver.
- Standardized formatted LAS file generation.
- Job database creation for storage and access of job stat information.
- Provides option to produce both letter sized and continuous feed plotter reports.
- Supports 40 present data types and up to 10 customized types for recording and plotting.
- Live WITS data display with customized ID and color.
- Convenient job info importing and exporting.
- Zipping files is easy for job sharing and archiving job information.



1.403.243.4438
www.kambi.ca